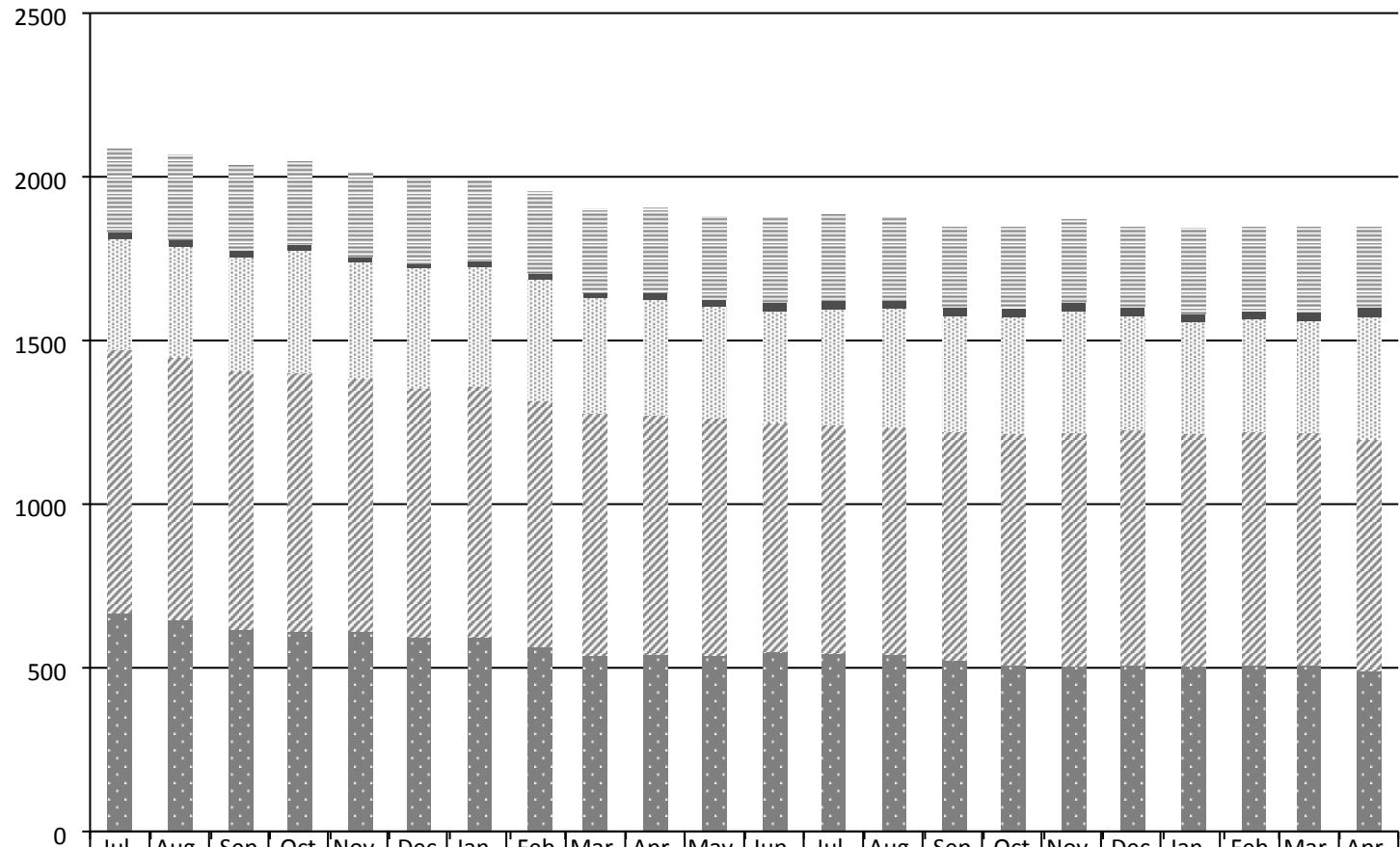


APPENDIX 2b



| | Jul-17 | Aug-17 | Sep-17 | Oct-17 | Nov-17 | Dec-17 | Jan-18 | Feb-18 | Mar-18 | Apr-18 | May-18 | Jun-18 | Jul-18 | Aug-18 | Sep-18 | Oct-18 | Nov-18 | Dec-18 | Jan-19 | Feb-19 | Mar-19 | Apr-19 |
|--|--------|--------|--------|--------|--------|--------|--------|--------|--------|--------|--------|--------|--------|--------|--------|--------|--------|--------|--------|--------|--------|--------|
| ■ No. of preapps (incl. invalid for fee) | 668 | 648 | 618 | 612 | 611 | 595 | 593 | 565 | 537 | 541 | 539 | 548 | 543 | 540 | 523 | 509 | 506 | 509 | 506 | 507 | 508 | 491 |
| ▨ No. of applications valid | 1472 | 1447 | 1406 | 1401 | 1382 | 1354 | 1360 | 1316 | 1276 | 1271 | 1263 | 1247 | 1243 | 1233 | 1221 | 1215 | 1217 | 1228 | 1216 | 1222 | 1218 | 1198 |
| ▩ No. of CN and CS applications | 1811 | 1785 | 1755 | 1775 | 1740 | 1721 | 1726 | 1686 | 1630 | 1625 | 1604 | 1589 | 1594 | 1597 | 1573 | 1570 | 1590 | 1575 | 1558 | 1564 | 1558 | 1572 |
| ■ No. of appeals | 1831 | 1807 | 1774 | 1792 | 1756 | 1735 | 1742 | 1704 | 1647 | 1646 | 1626 | 1616 | 1621 | 1623 | 1601 | 1599 | 1617 | 1600 | 1582 | 1589 | 1587 | 1600 |
| ▨ No. of enforcement cases | 2084 | 2066 | 2034 | 2047 | 2014 | 1993 | 1987 | 1956 | 1903 | 1905 | 1878 | 1876 | 1884 | 1877 | 1849 | 1848 | 1870 | 1849 | 1842 | 1847 | 1845 | 1849 |